



## Husqvarna KLIPPO LB 553SQe

KLIPPO LB 553SQe, a reliable and dedicated BioClip® mower with front-wheel drive for commercial use. The full-sized 53 cm cutting deck makes it a perfect solution for mid-sized to larger areas or as a complementary trimming tool for ride-on or robotic mowers. The design has focused on achieving the best possible ergonomic conditions for the operator and an extraordinary cutting results, even in wet weather. Equipped with the fully commercial and high-specified Husqvarna HS 166AP engine, cast aluminium deck, light-weight aluminium wheels and an ergonomic side-adjustable and effective anti-vibrated handle system, which help the model fulfil A(8) EN836. KLIPPO LB 500 Series, commercial models with outstanding performance and durability for a long-term relation.



### Husqvarna HS 166AP engine

HS 166AP, a powerful and fully commercial walk-behind engine from Husqvarna. Designed for high reliability and easy starting. High specified components to withstand tough daily usage and for guarantee longest possible service-life.

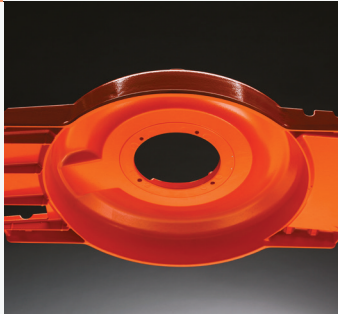


### Aluminium rims

8-inch cast aluminium rims with double-sealed bearings. Rubber tyres provide deeper tread depth for increased traction and a more comfortable drive.

### Aluminium chassis

Heavy-duty, cast aluminium chassis provides increased strength and a longer life.



### Cutting height adjustment

Comfortable spring-loaded central cutting height adjustment featuring 5 increments with a span from 28 to 65 mm.



## FEATURES

- Cast aluminium chassis for longer service life
- Cast aluminium rims for longer service life
- A powerful and fully commercial walk-behind engine from Husqvarna. Designed for high reliability and easy starting.
- Comfortable central cutting height adjustment
- BioClip®
- Side protection bumper
- Side adjustable handlebar for optimum user position

Technical Specifications	
<b>BATTERY</b>	
Battery capacity	0 Ah
Battery type	--
<b>CAPACITY</b>	
Net power at preset rpm	2900 rpm
<b>DIMENSIONS</b>	
Article gross weight	43500 g
Article net weight	38500 g
Collector volume	0 l
Cutting width	53 cm
Cylinder displacement	166 cm <sup>3</sup>
Handle height adjustment	Yes
Handle height adjustment	2 Step
Weight (complete product w/o side packed articles)	38.5 kg
Wheel size, Front	203 mm
Wheel size, Rear	203 mm
Wheelbase	59.5 cm
<b>ENGINE</b>	
Cylinder displacement	166 cm <sup>3</sup>
Electrode gap	0.75 mm
Engine brand	Husqvarna
Engine cooling	Air
Engine name	HS 166AP
Fuel tank volume	1.5 l
Spark Plug	Husqvarna HQT-7
<b>EQUIPMENT</b>	
Air filter type	Dual element
BioClip® kit	Not available as accessory (NOT AVAILABLE)
BioClip® plug	N/A
Blade brake clutch (BBC)	No
Blade type	Mulcher blade
CLG Product (Calc)	Yes
Collector	No
Collector type	None
Collector volume	0 l
Deflector	No
Drive control	Lever
Drive system	Self-propelled, single speed
Drive wheels	Front
Foldable handle	No
Handle type	Anti-vibration
Lawnmower drive type	Front-wheel drive
Side adjustable handle	Yes
Soft grip	Yes
Throttle control	No
Water hose connection	No
Wheel bearing, front/rear	Yes/Yes
Connectivity	Not applicable
<b>LUBRICANTS</b>	
Engine lubrication type	Splash
Fuel consumption	407 g/kWh
Fuel consumption	0.023 l/min
Oil filter	No
Power/fuel type	Petrol
<b>MATERIALS</b>	
Cutting deck material	Aluminium
Master pack: Paper material	0 g
Metal total	0 g
Paper (PAP 22)	1800 g
Paper material total	4830 g
HDPE (02) total	0 g
PET (01) total	0 g
Plastic foil total	150 g
Plastic rigid total	0 g
Plastic total	150 g
PS/EPS/HIPS (06) total	0 g
Rims, material	Aluminium
<b>PACKAGING</b>	
Packaging height	458 mm

**Technical Specifications**

Packaging length	994 mm
Packaging width	594 mm
Quantity in Master pack	1

**SOUND AND NOISE**

Sound power level, guaranteed (LWA)	96 dB(A)
Sound power level, measured	95 dB(A)
Sound pressure level at operators ear	83 dB(A)

**VIBRATIONS**

Vibrations handlebar	3.4 m/s <sup>2</sup>
----------------------	----------------------